

Binary Telecom Unified Messaging – End User instructions

To access voice mail from the phone, the easiest way to get your messages is to dial *98, and follow the spoken instructions.

This document will provide a general overview of the Account Subscriber and Unified messaging Self-Care interface on your computer's browser.

System Requirements

OS: Windows 95-XP, UNIX or Mac OS

Browser: Internet Explorer 6.0 or higher, Netscape 6.2 or higher supporting DOM and with enabled JavaScript.

Overview

Unified Messaging or "UM" is part of a fully featured Voice over Internet Protocol or "VoIP" billing and communication services platform.

UM gives subscribers the ability to process emails and faxes, manage voicemails, all from within a web browser, or a favorite email client.

UM provides a non-intrusive, single interface for all telephony and messaging functions, and it cleverly increases proficiency and productivity because it is easy to use and manage.

Account Login:

Open your browser to the Binary Telecom website, www.binarytelecom.com and click on <login to manage s single number> or <Login to manage your account>. When you login to manage your account, you can make payments on all your numbers.

com - Mozilla Firefox

Bookmarks Tools Help

http://www.binarytelecom.com/

st Headlines Online malware scan

[How to access your voice mail and account information](#) | [Login to manage a single phone number](#) | [Login here to manage your account](#) | [Privacy Policy & Terms of Service](#)

Binary Telecom Internet Telephone Service Provider

Home

Products & Services

Calling Features

Rate Calculator

International Rates

FAQs & Configs

Sign Up Online

Company Info

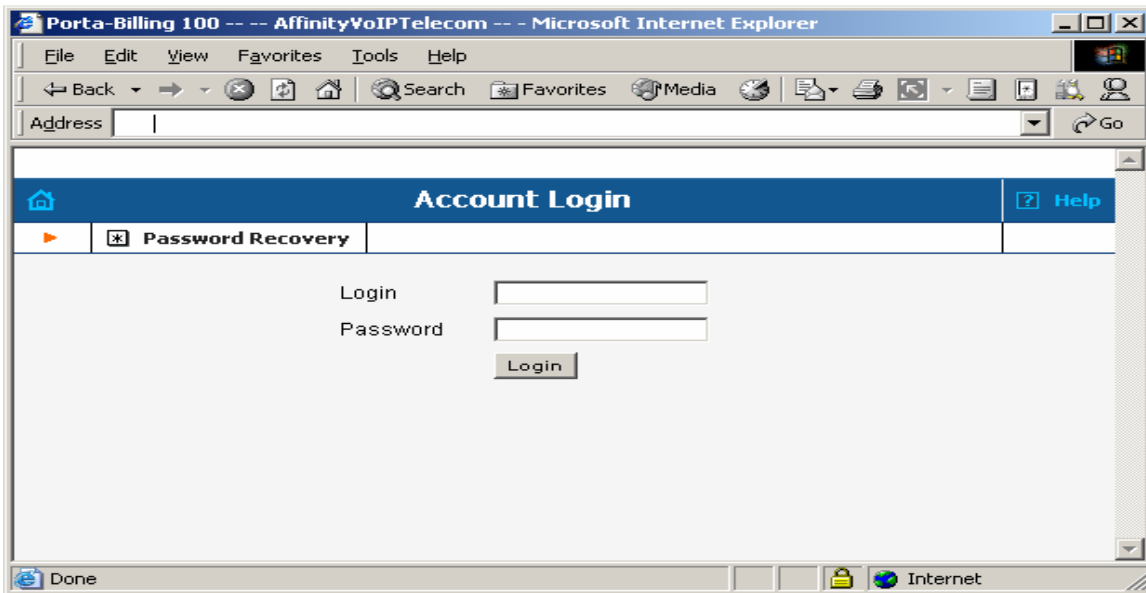
Using Voice over Internet Protocol (VoIP), Binary Telecom, located in Portland, Oregon, saves customers all over the US up to 50% over traditional service on the Public Switched Telephone Network (PSTN). Our system now terminates and originates hundreds of thousands of calls per day.

Binary Telecom customers get service with **NO LONG TERM CONTRACT** call us at 800.594.3670, and let us sign you up on the phone. Or fax us this Letter of Authorization ([LOA](#)), and we will start the ball rolling. Here are more [reasons why Binary Telecom is better](#).

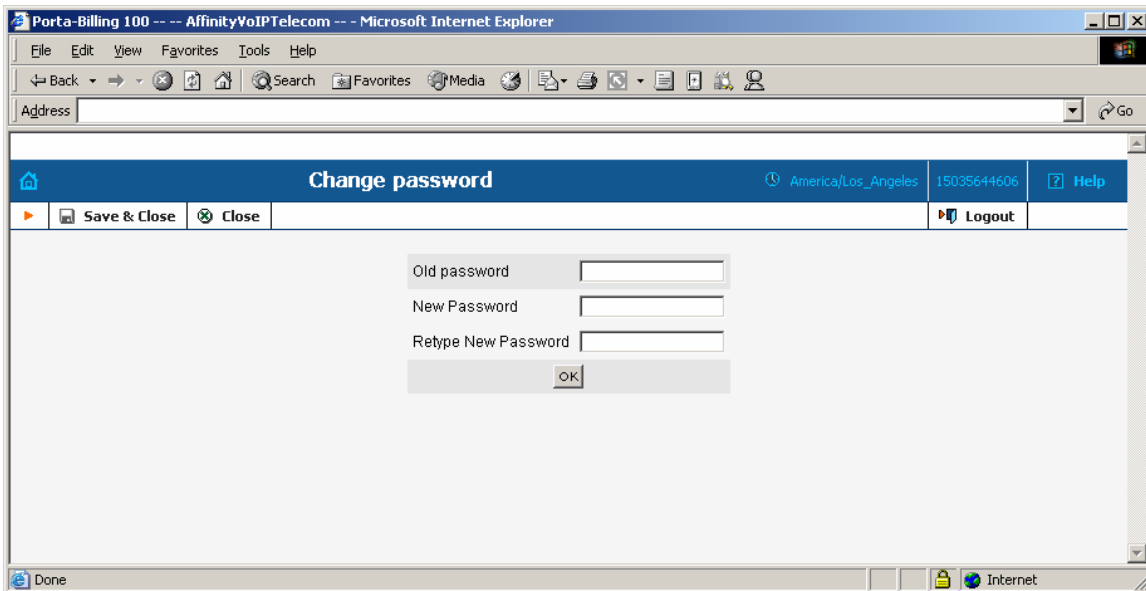
Use an IP PBX, or let us provide you with a compatible Gateway or Analog Telephone Adapter (ATA) that will modernize your old phone system.

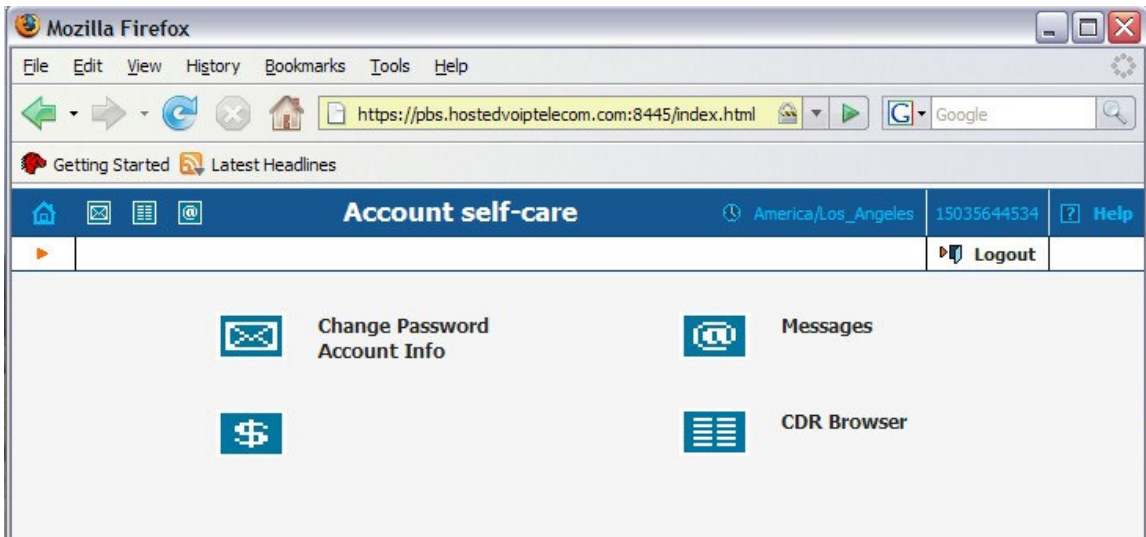
If you are a small business (our target audience), this [checklist](#) will help us set you up with the right combination of service and hardware. Use this link to [test your network for VoIP](#).

Use the account login page to log into your account. The login will be your eleven digit telephone number. Your initial password will be provided to you. You will be required to change your password upon your first login and then every three months after that.



When you first obtain your account, you may want to change your password. While you cannot change your login ID, the system does give you the ability to change your own password. For security purposes, the system requires that you change your password every three months and will not allow you to use a password that is the same as the last three passwords you have used. Your password must contain a minimum of at least six characters and must contain a combination of both alpha and numeric characters only.





Explanation of links

Change Password

Allows user to change password access to this site

CDR Browser

all activity on the account, including inbound and outbound call detail, payment & credit card activity, and International charges

Account Info

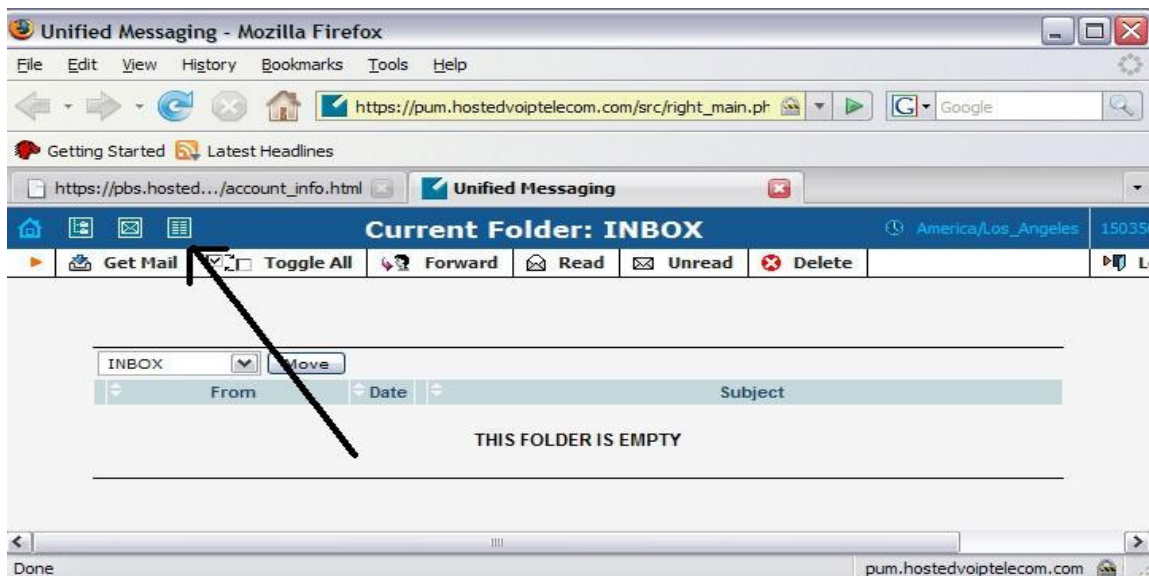
Allows user to see account settings and set the Follow-Me rules (Advanced Call Forwarding). This link will show you if the ATA, IP PBX or IP phone is registering with the Binary switch, and what the IP address is that your device is using to connect.

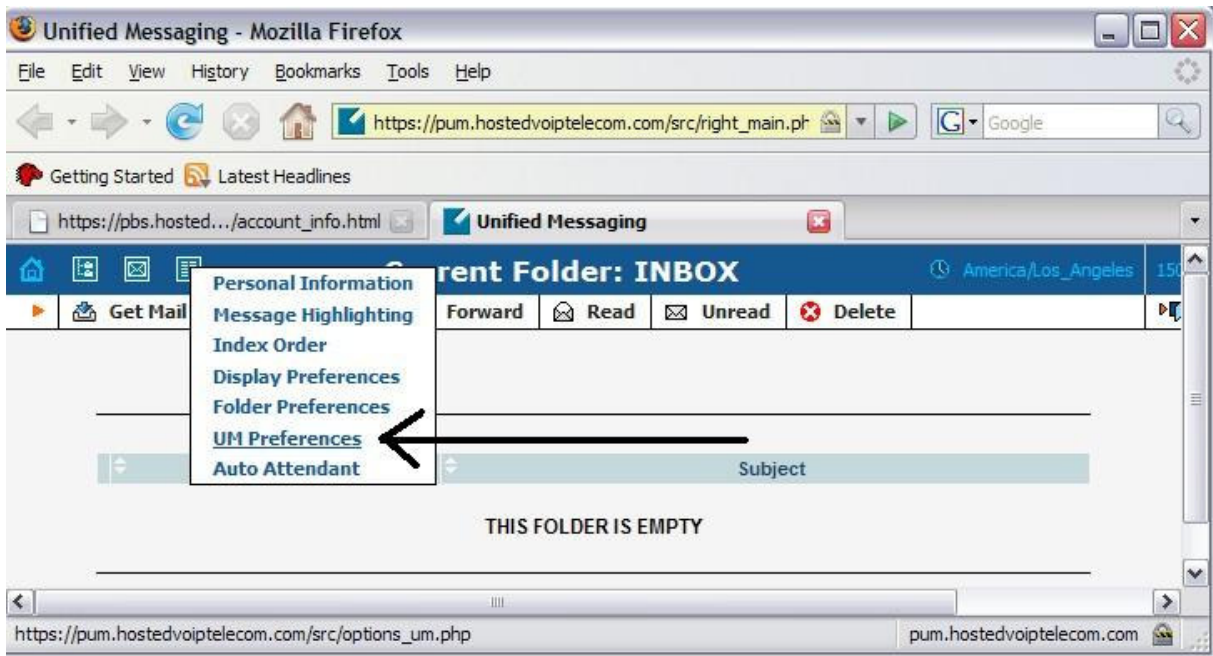
Messages

Allows user access to the Unified Messaging Inbox. This is a full featured email client, and offers settings that will allow for the integration of voice-mail and faxes with an existing email client.

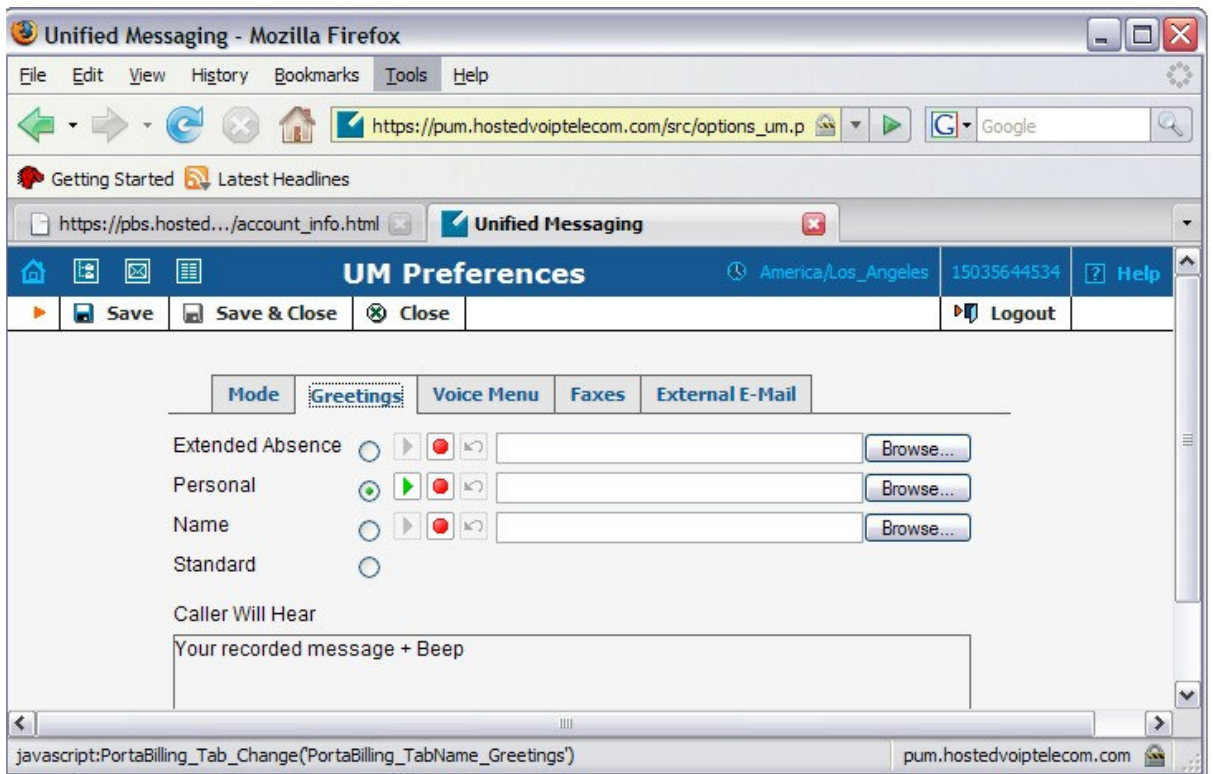
To set UM Preferences:

Click on <Messages> and mouse over the Icon pointed to by the arrow in the image shown below.

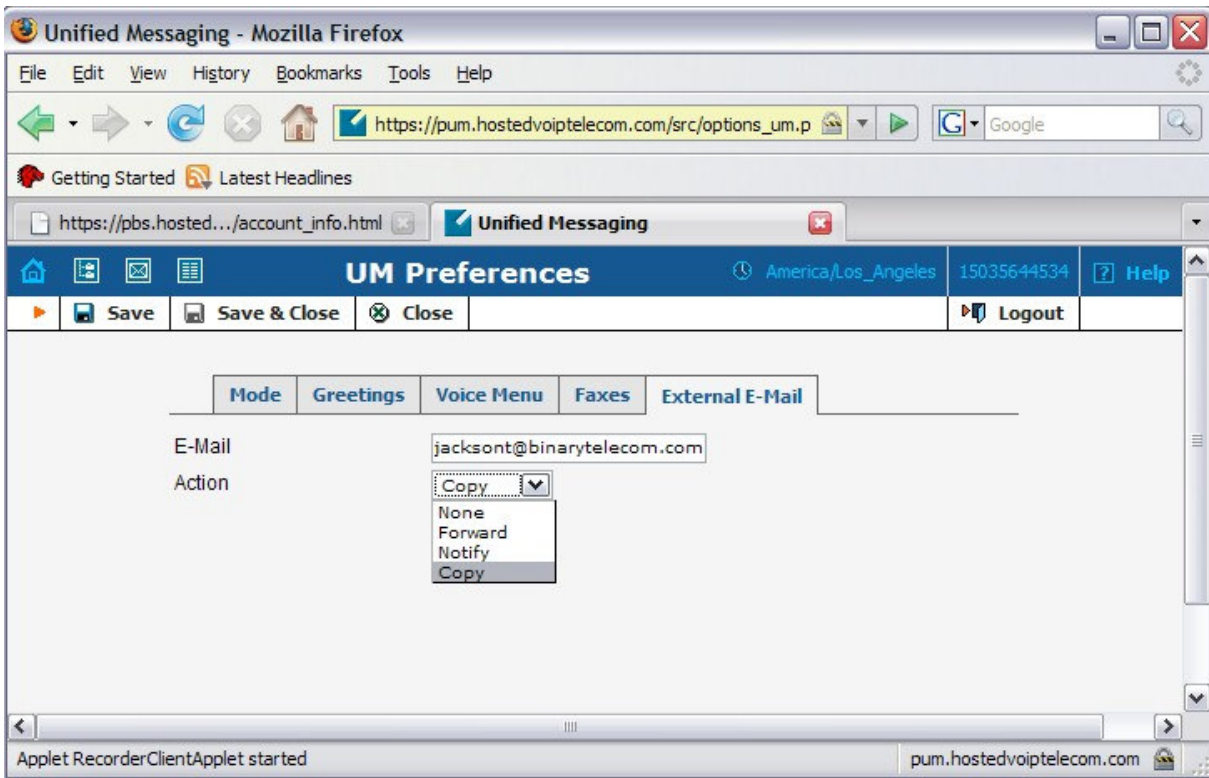




Click on UM preferences

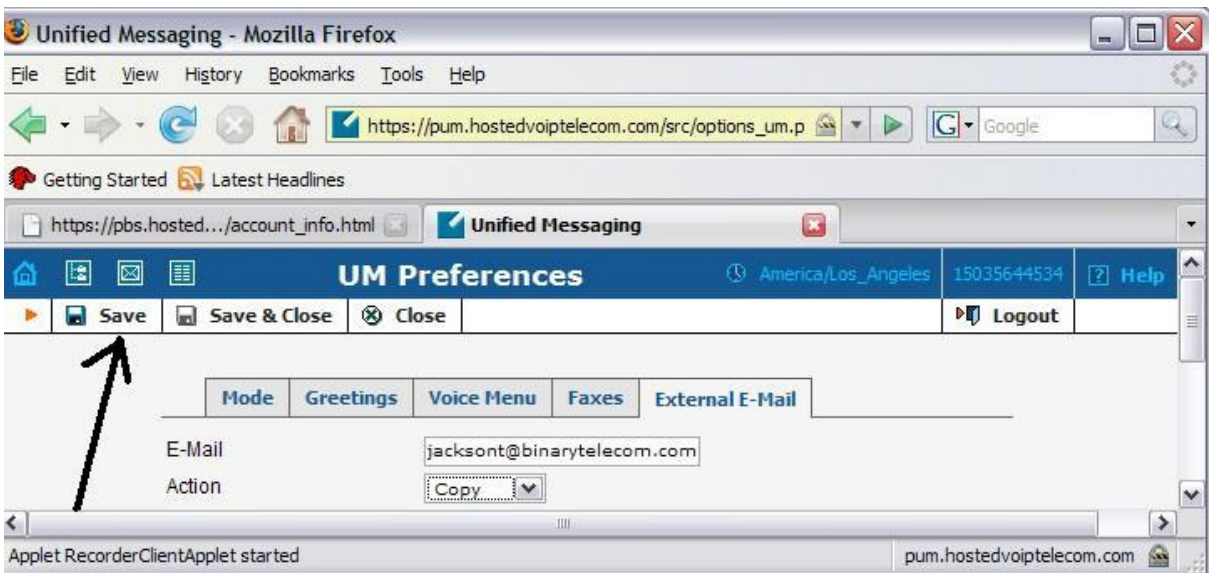


The <Greetings> tab allows you to record a voice mail greeting with your computer's microphone.



Inserting an email address and selecting an <action> will

- **Forward** all voice mail and faxes to the email address(s) shown. For more than one address, separate multiple addresses with a comma
- Or send a **copy** of voice mails and faxes to the email address(s) shown, retaining a copy on the Binary server
- **Notify** the email address shown that a voice mail or fax is on the Binary Server.



Be sure to save the settings and/or changes you have entered